

# Invest in Science Development Fund for a Sustainable Future

Your gift will help us  
advance excellence,  
knowledge and  
leadership via:

- Innovative Research
- Student Support & Enrichment
- Education & Outreach



# Pioneering the Future: Innovative Research



## Pushing the Boundaries of Knowledge

Research is the backbone of scientific advancements. Today's contemporary challenges require solutions beyond a single perspective. Our multidisciplinary collaborative research fosters cross-fertilisation of ideas and provides creative solutions.

**Support our researchers in breeding new insights and making groundbreaking discoveries in emerging fields.** You can also designate your support to a discipline that means most to you.



## Supporting Our PhD Students

The dedicated support of our research postgraduate students is crucial for the success of our projects, as they work tirelessly alongside our researchers, providing invaluable assistance. Your generosity will enable us to **provide our PhD students with the support they need to excel in their studies**, so that they will be able to continue conducting important research that could potentially change the world.

Your donation will support our students in the following ways:



Research expenses



Travel allowances for international conferences



Postgraduate scholarships and awards



Living expenses and accommodation



# Empowering Leaders of Tomorrow: UG Student Support & Enrichment



Supporting undergraduate students is a vital investment in the future of education and society as a whole. **By donating to our cause, you can help us provide invaluable resources and opportunities that enrich the undergraduate experiences and to realise their potentials.**

Your support will help us create a nurturing and inclusive environment for students with the following:



Academic and personal training



Diverse learning experiences



Scholarships and financial aids



Wellbeing resources and tools



## Examples of students benefitting from HKU's support to enrich their learning opportunities:

### Student delegation driving climate action at COP27



**“** I was proud to see youth's ideas were taken into consideration and would make a difference in the wider context of the Global Goal on Adaptation. **”**

**Mark Kong Wai CHEUNG**  
BSc student (Environmental Science)  
Leader of student delegation to COP27

### Science undergraduates shine again with Gold Medal in International iGEM Competition 2023



Collaborating with students across various faculties, a team of science students crafted a synthetic biology tool aimed at advancing the frontier of cancer immunotherapy. With the unwavering backing of the Faculty, they had the opportunity to showcase their work and go head-to-head with over 400 teams comprising diverse disciplines from more than 45 nations at the competition held in Paris.



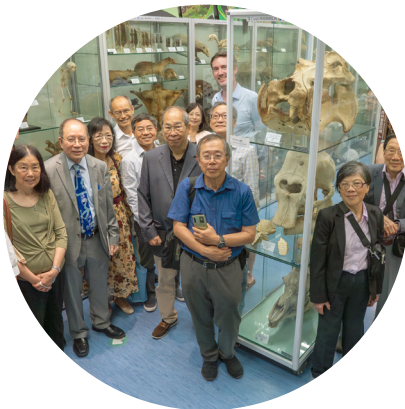
# Engaging the Community: Education & Outreach



## Fostering Appreciation and Preservation for Biodiversity Heritage

As the first museum in Hong Kong dedicated to biodiversity and the home to 50,000 specimens of plants, fungi and animals, the Hong Kong Biodiversity Museum (HKBM) has welcomed over 40,000 visitors and hundreds of school groups since its establishment in May 2021. Disseminating knowledge on ecosystems, species biology and their conservation, the museum offers a unique view of the natural heritage while promoting environmental education and fostering biodiversity appreciation.

**Your donation will play a vital role in bolstering our staffing to increase our visitor capacity for more educational activities.**



### About HKBM:

<https://www.hkbiodiversitymuseum.org>



## Make a Gift Now



<https://rb.gy/tyhcw5>  
**Thank you!**

### Enquiries

✉ [science@hku.hk](mailto:science@hku.hk)

☎ (852)3917-2683

### Follow us on

📘 [science.hku](https://www.facebook.com/science.hku)

🐦 [hku\\_science](https://twitter.com/hku_science)

📷 [hku\\_science](https://www.instagram.com/hku_science)

📺 [hkufacultyofscience](https://www.youtube.com/channel/UCkufacultyofscience)