

TCL

Ramp Up
and Go All-Out to Be a Global Leader

TCL (GROUP)

2022. 4

向过去致敬
为未来向前





TCL Research in Hong Kong, Science Park

TCL

TCL is a fast-growing consumer electronics company and leading player in the global TV industry. Founded in 1981, it now operates in over 160 markets globally. According to Sigmaintell, TCL ranked 2nd in the global TV market in terms of sales volume in 2019. TCL specializes in the research, development, and manufacturing of consumer electronics products ranging from TVs to audio, and smart home products.

TCL Research

- Vision: A world class R&D organization
- Mission: To enhance the global competitiveness of TCL Corporation through innovative research and development.

Team

Our team has research scientists from world-renowned universities as well as experienced research engineers. We also closely cooperate with the world's top universities and institutions.

Explore

We're advancing the state-of-the-art in artificial intelligence through fundamental and applied research including computer vision, speech recognition, natural language processing, and machine learning.

Cooperation

We have set up joint laboratories and projects with universities and research institutes with full or in-depth cooperation in certain fields.

Publications and Awards

Our research work has been published at top-tier conferences, including CVPR and ICCV. Our research project collaboration with TCL Design Research (PIVOT Smarthome Experience) has been nominated for a 2022 UX Design Award.

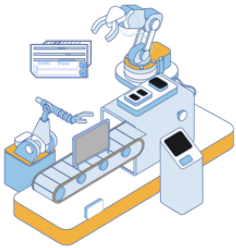


Alliance with TCL to foster research collaboration

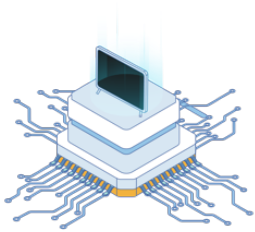
22 Nov 2021



AI for Smart Manufactory

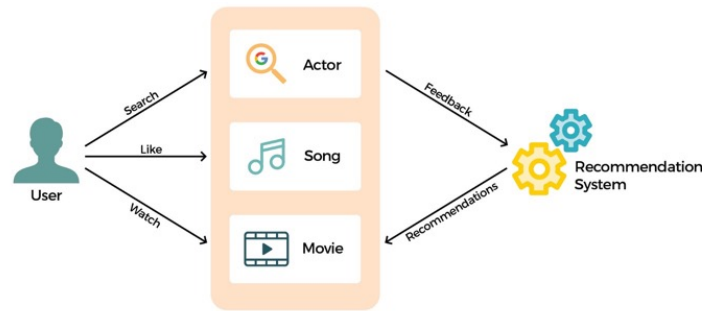


Industrial Vision Inspection



Big Data Knowledge Management and Analysis

AI for Recommendation System



Query Recommendation for Video Search

VOD Homepage recommendations

.....

AI for Smart Phones

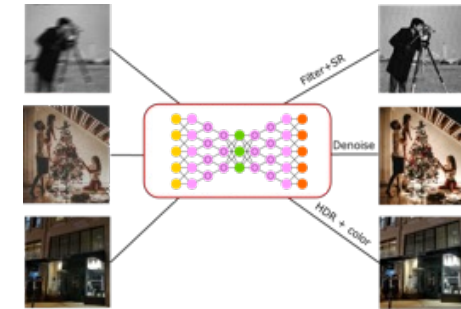
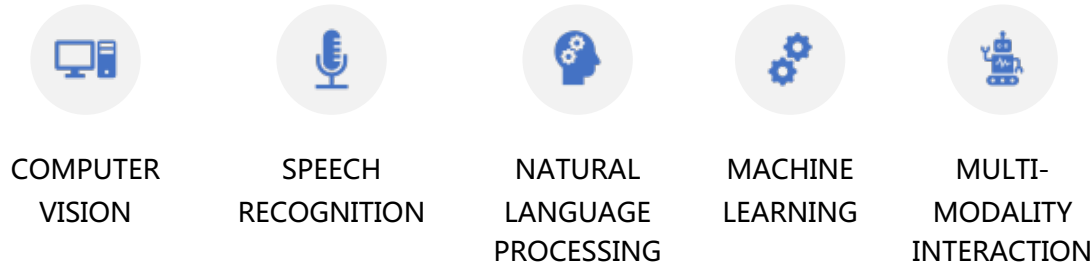


Image Quality Enhancement

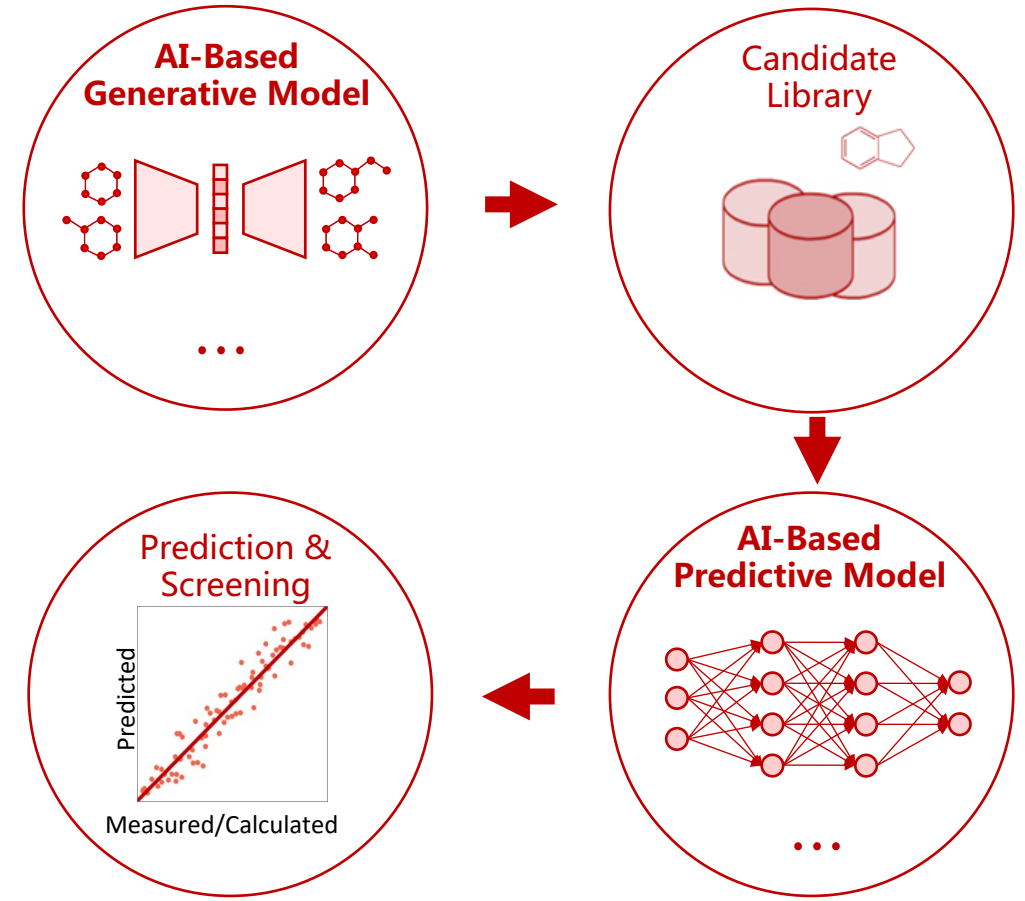


AI Applications in Photography

- AI for Smart Life



- AI for Materials Discovery



Workflow of AI-assisted materials discovery



Email: cecilia.tam@tcl.com

Telephone: 31802700

T
THANK YOU