



# Science Master Class

## Tuition Fees

	BSc	MRes
Local students	HKD 42,100 per year*	HKD 120,000 (full course)
Non-local students	HKD 182,000 per year*	

\* 4 years

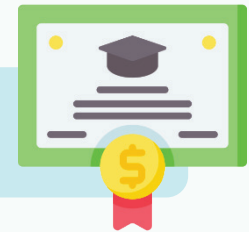
## Scholarships

- Entrance scholarship Scholarships will be provided to cover at least 50% of the tuition fee of the MRes programme



# Science Master Class

## Science Entrance Scholarship



HKDSE Examination Results in one-sitting (total score in best 5 subjects in Category A or Extended Module 1 or Module 2 of Mathematics)	Scholarship Amount (HK\$)
Score = 42.5	\$70,000
Score ≥ 41	\$60,000
Score ≥ 39	\$50,000
Score ≥ 37	\$40,000
Score ≥ 35	\$20,000
Score < 35 with 5** in at least 2 subjects from Biology/ Chemistry/ Physics/ Combined Science/ Mathematics/ M1/ M2	\$10,000



# Science Master Class

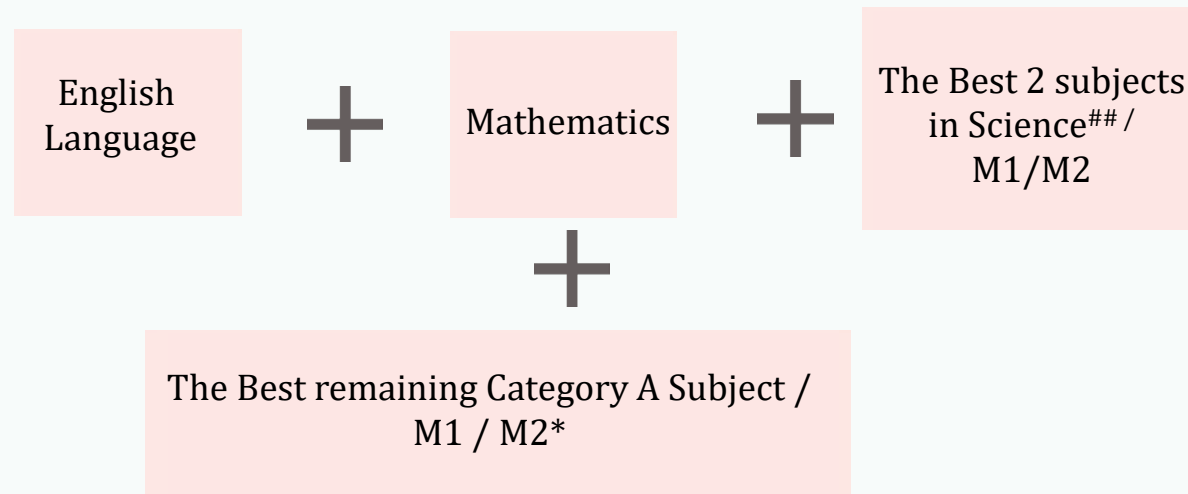
## Admissions Requirements – JUPAS

### Minimum Programme Entrance Requirements

English Language	Chinese Language	Mathematics	Liberal Studies	Science Elective Subjects <sup>#</sup>
Level 3	Level 3	Level 4	Level 2	Level 3 (two subjects)

<sup>#</sup>Science elective subjects: Biology, Chemistry, Physics and Combined Science (the components of Combined Science must not overlap with other Science electives.)

### Selection principle: **BEST 5**



<sup>\*</sup>Subject Weighting(s): 1.5 x Biology / Chemistry / Physics / Combined Science / Mathematics Extended Part (Module 1 or 2)

**2023 Expected JUPAS admission score: 33**

### HKDSE 'level to score' conversion

Category A Core and Elective Subjects and Extended Module 1 or Module 2 of Mathematics							
Level	1	2	3	4	5	5*	5**
Score	1	2	3	4	5.5	7	8.5

6688

BSc&MRes

# Science Master Class

## Non-JUPAS Application

Non-JUPAS applicants will be considered on a case-by-case basis. In general, excellent results in Mathematics and Science subjects are required



### 2022 Admissions Statistics – Non-JUPAS (for reference)

#### GCEAL

Lowest admissions score

4A\*

#### IB

Lowest admissions score

41

6688

BSc&amp;MRes

# Science Master Class

## Interview

Interview is an integral part of the admissions process. It serves to exhibit a different dimension of your ability and facilitate our deeper understanding on your suitability for this programme. Only Band A applicants would be invited for interview.

## JUPAS tips

You are strongly encouraged to put 6688 Science Master Class as your Band A1 choice in your JUPAS application to maximise your chances of being admitted.

## Quota

24

